




VIEWER DATALOGGING SOFTWARE

ESM-EZM VIEWER

Process Controllers	ESM-XX50
Process Indicators	ESM-XX00
Timer & Counters	EZM-XX50

- 32 devices Monitoring at the same time on the screen
- Data of Process, Output, Alarm and Status
- Real-time graphic support
- Data types selection for monitoring
- Visual alarm set and monitoring
- Data logging as Text or Excel files
- Compatible with Windows Operating Systems
- Saving device parameters, download and upload
- Turkish and English language selection
- Selectible comports between COM1...COM9
- ModBus RTU communication protocol
- RS-485 or RS-232 connection
- Adjustable data logging internal
- Stop or pause of datalogging
- Total counting monitoring for timers and counters
- Occure a text or excel file with determined frequency and file name
- Password Protection for parameter selections

Usage of the Software

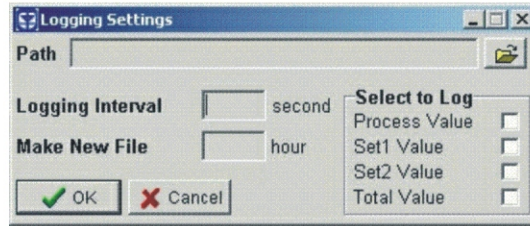
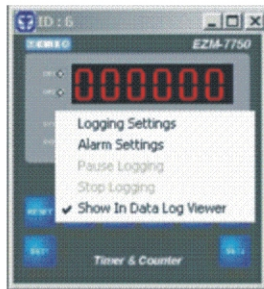
When the program runs for the first time, comport settings must be done. Comport setting window can be accessed from Setting⇒Comport Setting or by clicking  button. There is no need to do the comport setting if there is no fault or changes.


Data Logging

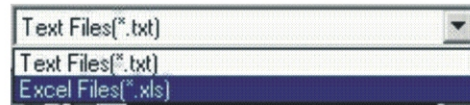
Data logging is done for 32 units. For ESM-XX50 series units; process value, set value, 2nd sensor value (if exists), for ESM-XX00 series units process value, for EZM-XX50 series units process value, set1 value, set2 value, total value (If the unit operates in totalizer counter mode) can be selected to log. Logged datas are saved into an excel or a text formatted file. While data logging continues, logged datas are shown on data logging graphic screen for 10 units.

For starting the data logging;

Righth click on the relevant unit and data logging is selected. User determines filename (Logged data will be saved to this file), data logging interval (20-3600 seconds), make a new file time (1-9999 hour) .



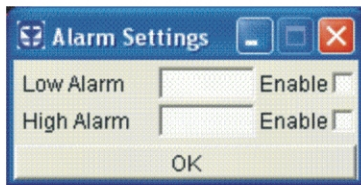
 button is used to determine where to save the file. File extension can be changed into excel or text file format.



While data logging continues, user can hold or stop the data logging. With 'Stop Logging' selection, logging is stopped and data on the graphic screen are erased. With 'Hold Logging' selection, logging is stopped but data on the graphic screen are not erased. '(D)' is putted next to the relevant ID number of the unit in graphical screen.

Alarm

Visual alarm property exists in process controller and process indicator units. Select 'Alarm Setting' by right clicking on the relevant unit. Low alarm and high alarm values becomes active when the relevant enable boxes are checked.



If process value is lower than the low alarm value or higher than the high alarm value, an alarm occurs. In this condition, a red band with the error name written on it is shown bottom of the unit.

Buttons and Their Functions

Process Controller (ESM-XX50);

Set value can be accessed and changed with set button.
Parameters can be accessed, changed, saved, printed and read the parameters' values from the text file and loading these parameters to the same type device with parameter accessing button.

Process Indicator (ESM-XX00);

Set value can be accessed and changed with set button.
Alarm latch can be canceled with decrement button.
Parameters can be accessed, changed, saved, printed and read the parameters' values from the text file and loading these parameters to the same type device with parameter accessing button.

Timer & Counter (EZM-XX50);

Set1 and set2 values can be accessed and changed with set1 and set2 buttons.
Total value can be accessed with total button (If the unit operates in totalizer counter mode)
Active value can be reset with reset button. (If the unit is not in reset protection mode)
Parameters can be accessed, changed, saved, printed and read the parameters' values from the text file and loading these parameters to the same type device with parameter accessing button.

Note: 1. If user wants to access to the parameters by entering the password as '0' even the password is not '0', user can not change the parameters but observe.

2. If no operation is performed with the parameters during 2 minutes, for accessing to the parameters, password must be entered again.